

# Lock Nut

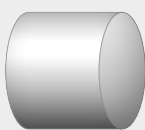
*Advanced Rim and Tyre Theft Prevention*

## Why Lock Nuts?

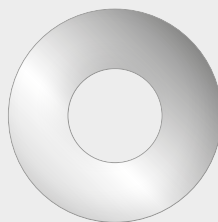
- ▶ To prevent the theft of rims and tyres
- ▶ A vehicle off the road means loss of income
- ▶ Reduce/improve claims experience
- ▶ Excesses imposed by Insurers
- ▶ We will reduce your theft excess for tyres and rims if your vehicles are insured with Merx



## LOCK NUT SPECIFICATIONS: Independently Moving Parts



*The inner thread  
- high tensile steel*



*The backing washer  
- hardened steel, limited rim damage*



*The inner thread  
- high tensile steel*

# Scenario



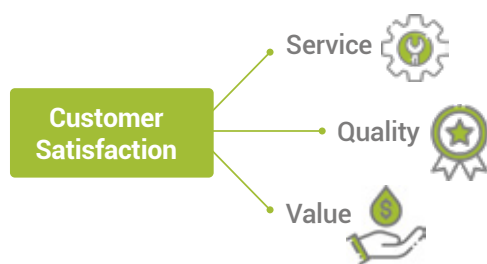
**18 Wheeler Rig:**  
Rim and tyre replacement cost (average)

**Steel:** R8 500 each  
**Aluminum:** R12 500 each  
(With a 15% of claim excess - minimum R15 000)

Steel = 18 x R8 500 = R153 000 with excess of R22 950  
Aluminium = 6 x R12 500 = R75 000 with excess of R11 250  
Aluminum + Steel = 12 x R8 500 = R102 000 with excess of R15 300

| UNIQUE LOCK NUT PATTERN  | OFF THE SHELF  |
|--|--|
| <p><b>Detailed fleet list giving:</b></p> <ul style="list-style-type: none"> <li>- Make of vehicle</li> <li>- Model</li> <li>- Year of manufacture</li> </ul> <p>For a unique pattern dedicated to your fleet, a minimum fleet size of 35 rigs is required.</p> <p><b>420 Lock Nuts = R105 000</b> (Excluding VAT)</p> | <p><i>(Detailed fleet list required)</i></p> <p><b>Cartons of Lock Nuts Available:</b></p> <ul style="list-style-type: none"> <li>- 6 Pack – General lock nuts = <b>R1 866</b> plus VAT includes 1 disengaging tool</li> <li>- 6 Pack – Scania lock nuts = <b>R1 966</b> plus VAT includes 1 disengaging tool</li> </ul> <p><i><b>This is less than the replacement cost of one rim and tyre, and some Insurance Companies will have a no excess policy if lock nuts are fitted to your vehicles</b></i></p> |

## Why we Recommend the Product



- Support your client
- Retention of business
- Client satisfaction
- Going the extra mile
- Protecting their investments

## Next Steps

- Brochure available
- Fax or e-mail it to us, together with a detailed fleet list
- Quotation given and if accepted - 50% deposit required with order
- Balance of payment to be made prior to delivery